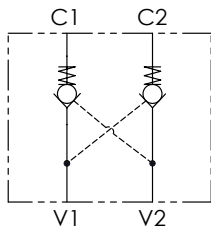




### SCHEMA IDRAULICO / HYDRAULIC CIRCUIT

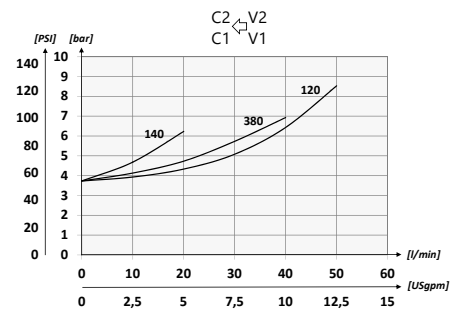
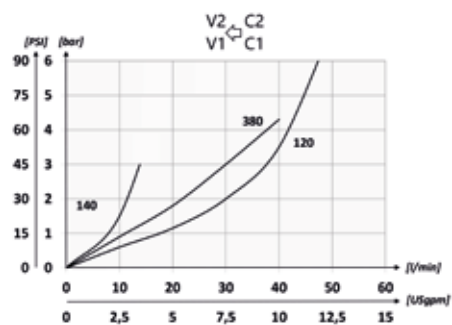


### CODICE ORDINAZIONE / ORDERING CODE

01	02	03
<b>VRDD</b>		

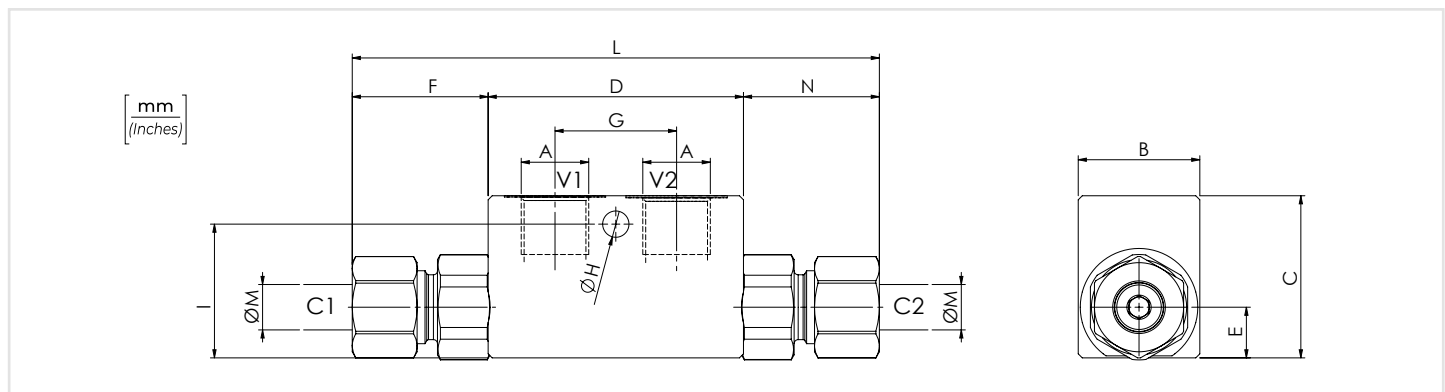
<b>01</b>	VALVOLE DI BLOCCO A DOPPIO EFFETTO DIN2353 (DIN2353 DOUBLE ACTING PILOT CHECK VALVES)	<b>VRDD</b>
<b>02</b>	DIMENSIONE (SIZE)	BSPB 1/4 <b>140</b>
		BSPB 3/8 <b>380</b>
		BSPB 1/2 <b>120</b>
<b>03</b>	DIMENSIONE TUBO (SIZE PIPE)	Per tubo Ø 8 - For Ø 8 pipe only for <b>BSPB 1/4</b> <b>T8</b>
		Per tubo Ø 12 - For Ø 12 pipe standard only for <b>BSPB 1/4 and 3/8</b>
		Per tubo Ø 15 - For Ø 15 pipe standard only for <b>BSPB 1/2</b>

### PERFORMANCES



### DATI TECNICI / TECHNICAL DATA

Olivo idraulico - Mineral oil	ISO 6743/4 (DIN 51524)
Viscosità olio - Oil viscosity	15-250 mm <sup>2</sup> /s (15 to 250 cSt)
Classe di contaminazione max con filtro Max contamination index with filter	ISO 4406:1999 Classe 19/17/14
Temperatura dell'olio - Oil temperature	-20°C +80°C -4°F +176°F
Temperatura ambiente - Environment temperature	-20°C +50°C -4°F +122°F
È indispensabile l'utilizzo di un filtro per proteggere la valvola (filtrazione consigliata 15 µm) It is necessary a filter use to protect the valve (advised filtration 15 µm)	
Trafilamento massimo Max leakage	0,25 cm <sup>3</sup> /min - 5 gocce/min 0,015 in <sup>3</sup> /min - 5 drops/min



### CARATTERISTICHE TECNICHE / TECHNICAL CHARACTERISTICS

TIPO / TYPE	A	PORTATA MAX / MAX FLOW l/min-USgpm	PRESSIONE MAX / MAX PRESSURE bar-PSI	B	C	D	E	F	G	H	I	L	M	PESO APPROX / APPROX WEIGHT kg-lbt	RAPPORTO DI PILOTAGGIO / PILOT RATIO		
VRDD140T8	BSPB 1/4	10 (2.6)	350 (5075)	30 (1.18)	40 (1.57)	63 (2.48)	12,5 (0.49)	28 (1.10)	30 (1.18)	6,5 (0.26)	35 (1.38)	113 (4.45)	8 (0.31)	0,60 (1.32)	1:9		
VRDD140		15 (4)						32 (1.26)				127 (5)	12 (0.47)	0,64 (1.40)			
VRDD380	BSPB 3/8	35 (9.2)						35 (1.38)				6,5 (0.26)	35 (1.38)	127 (5)	12 (0.47)	0,63 (1.38)	1:4
VRDD120	BSPB 1/2	45 (11.9)						35 (1.38)				50 (1.97)	82 (3.23)	16,5 (0.65)	33,5 (1.32)	36 (1.42)	